





# Foam pads PD series

			Connection type	Top port	Side port	
Pad with compact locking fitting <b>PDTM</b> φ4 ~ 15	⇒P193		Male screw (without connector)	PDTM-□-□	-	
Pad with locking fitting <b>PD □ K</b> φ20 ~ 100	⇒P194		Barb connector (φ60 ~ 100 female Screw type)	PDTK-□	PDYK-□	
Pad with spring fitting <b>NAPD □ S</b> Stroke (mm) φ20 ~ 50    6,15,30 φ60 ~ 100    10,30,50	⇒P197		Female screw (without connector)	NAPDTS-□-□	NAPDYS-□-□	
			Push-in connector	NAPDTS-□-□-0	NAPDYS-□-□-0	
			Barb connector	NAPDTS-□-□-T	NAPDYS-□-□-T	
Pad with spring fitting non-rotation type <b>NAPD □ H</b> Stroke (mm) φ20 ~ 50    6,15,30	⇒P200		Female screw (without connector)	NAPDTH-□-□	NAPDYH-□-□	
			Push-in connector	NAPDTH-□-□-0	NAPDYH-□-□-0	
			Barb connector	NAPDTH-□-□-T	NAPDYH-□-□-T	
Maintenance parts  Fitting ⇒P193, 194, 197, 200 Setting screw ⇒P336 Holder ⇒P194 Pad ⇒P202			Locking fitting	Male screw Barb connector	Reference each page	- Reference each page
			Spring type fitting	Push-in connector Barb connector	Reference each page	Reference each page
			Setting screw		Reference each page	
			Holder		PDH	
			Pad		PDG	

## Pad material table

● : Standard

○ : Made to order

	Material	Indentification	Symble	Round pad													
				4	6.5	8	9.5	12	15	20	30	40	50	60	70	80	100
Standard	Conductive chloroprene	Black	CRE	●	●	●	●	●	●	○	○	○	○	○	○	○	○
	Chloroprene	Black	CR	○	○	○	○	○	○	●	●	●	●	●	●	●	●

# Pad with compact locking fitting / PDTM

## How to order

PDTM - <sup>①</sup>4 - <sup>②</sup>CR-E - <sup>③</sup>M5M

① Pad diameter (mm)

4	φ4
6.5	φ6.5
8	φ8
9.5	φ9.5
12	φ12
15	φ15

② Rubber Material

CR-E	Conductive Chloroprene
------	------------------------

③ Screw type

M5M	M5
10-32M	10/32M

If ① is 4, only M5M screw available

## Pad standard specifications

Symbol	Materials	Hardness(Hs)	Ambient temperature	Color	Volume resistivity
CR-E	Conductive Chloroprene	A20/S	-30 ~ 110°C	Black	10 <sup>4</sup> Ω · cm

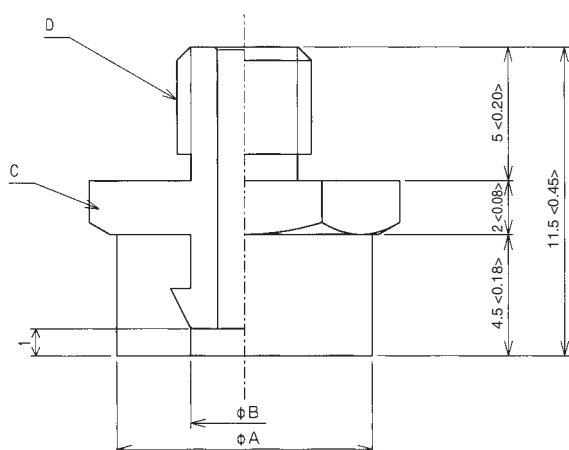
Note) Volume resistivity shows conductivity, resistance value is per cm<sup>3</sup>.

## Applicable fitting table

Screw type	How to order	Round pad					
		4	6.5	8	9.5	12	15
Male screw	DTM-4-M5M	○					
	DTM-6.5-M5M		○	○			
	DTM-6.5-10-32M		○	○			
	DTM-9.5-M5M				○		
	DTM-9.5-10-32M				○	○	
	DTM-12-M5M					○	
	DTM-15-M5M						○
	DTM-15-10-32M						○

## Dimensions

Unit : mm <inch>



mm

PDTM	φ A	φ B	Width across flat C	D
PDTM-4- *-M5M	4	1.5	4	M5
PDTM-6.5- *-M5M	6.5	3.2	8	M5
PDTM-6.5- *-10-32M	6.5	3.2	12	10/32-18UNC
PDTM-8- *-M5M	8	3.2	8	M5
PDTM-8- *-10-32M	8	3.2	12	10/32-18UNC
PDTM-9.5- *-M5M	9.5	4	10	M5
PDTM-9.5- *-10-32M	9.5	4	12	10/32-18UNC
PDTM-12- *-M5M	12	4	12	M5
PDTM-12- *-10-32M	12	4	12	10/32-18UNC
PDTM-15- *-M5M	15	5	15	M5
PDTM-15- *-10-32M	15	5	15	10/32-18UNC

inch

PDTM	φ A	φ B	Width across flat C	D
PDTM-4- *-M5M	0.16	0.06	0.16	M5
PDTM-6.5- *-M5M	0.26	0.13	0.31	M5
PDTM-6.5- *-10-32M	0.26	0.13	0.47	10/32-18UNC
PDTM-8- *-M5M	0.31	0.13	0.31	M5
PDTM-8- *-10-32M	0.31	0.13	0.47	10/32-18UNC
PDTM-9.5- *-M5M	0.37	0.16	0.39	M5
PDTM-9.5- *-10-32M	0.37	0.16	0.47	10/32-18UNC
PDTM-12- *-M5M	0.47	0.16	0.47	M5
PDTM-12- *-10-32M	0.47	0.16	0.47	10/32-18UNC
PDTM-15- *-M5M	0.59	0.2	0.59	M5
PDTM-15- *-10-32M	0.59	0.2	0.59	10/32-18UNC

Suction pads

# Pad with locking fitting / PDKT · PDYK

## How to order

① PD **T** K – ② **20**

① Vacuum port      ② Pad diameter (mm)

T	Top port	20	φ20
Y	Side port	30	φ30
		40	φ40
		50	φ50
		60	φ60
		70	φ70
		80	φ80
		100	φ100

## Fitting specifications

Pad diameter		φ20 ~ 50		φ60 ~ 100		
Vacuum port type		Top port	Side port	Top port	Side port	
Connection type	Without connector	×	×	Rc1/8	Rc1/8	
	Barb connector	φ4 × 2.5	×	×	×	×
		φ6 × 4	○ (M5)	○ (M5)	×	×
Fitting attachment type		Male screw	Female screw	Male screw	Female screw	

## Pad standard specifications

Symbol	Materials	Hardness(Hs)	Ambient temperature	Color
CR	Chloroprene	A15/S	-30 ~ 130°C	Black

## Applicable fitting table

		How to order	Round pad							
			20	30	40	50	60	70	80	100
Fitting	Top port	PFTK-15-K	○							
		PFTK-25-K		○	○					
		PFTK-50-K				○				
		PFTK-60-K					○	○	○	○
	Side port	PFYK-15-K	○							
		PFYK-25-K		○	○					
		PFYK-50-K				○				
		PFYK-60-K					○	○	○	○
Setting screw	TN-PF-20-M5	○								
	TN-PF-25-M6		○	○						
	TN-PF-50-M8				○					
Holder	PDH-20-M5	○								
	PDH-30		○							
	PDH-40			○						
	PDH-50				○					
	PDH-60					○				
	PDH-70						○			
	PDH-80							○		
PDH-100								○		

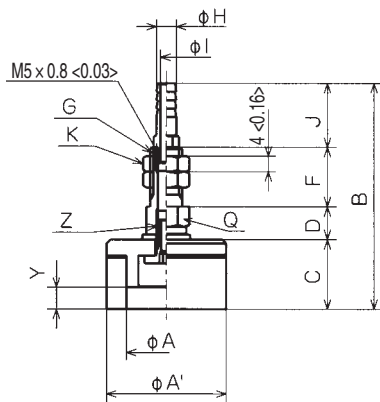
Note 1) A holder is necessary for pad attachment.

Note 2) A setting screw is needed to attach pad with diameter 20mm to 50mm.

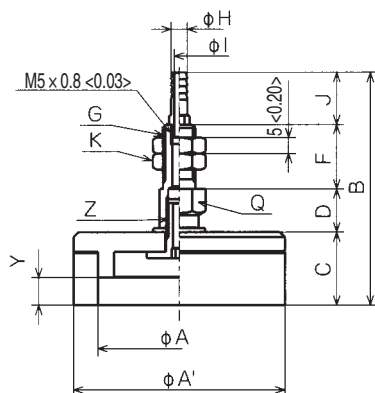
Note 3) Please attach directly pad with diameter 60mm to 100mm to the fitting.

Dimensions

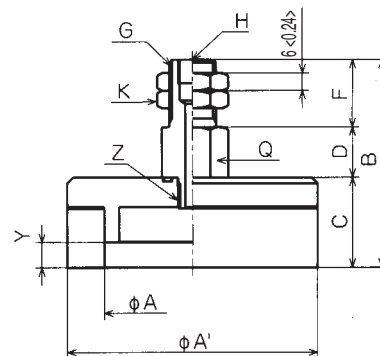
Unit : mm <inch>



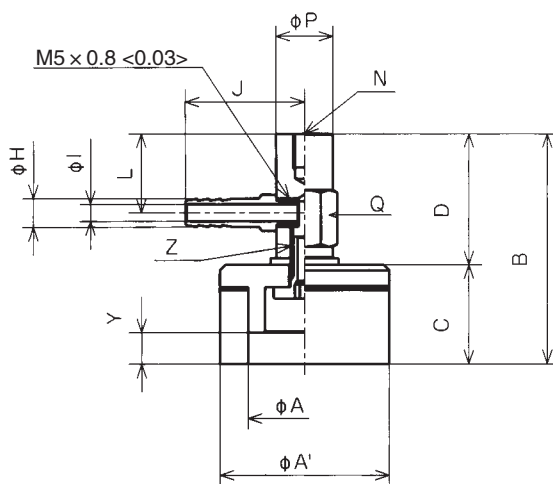
PDTK-20



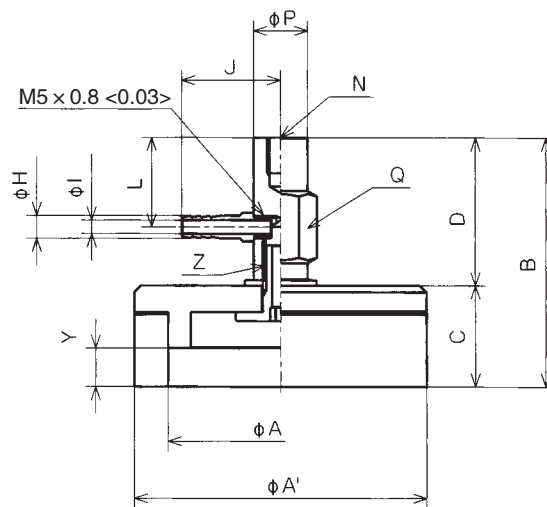
PDTK-30/40/50



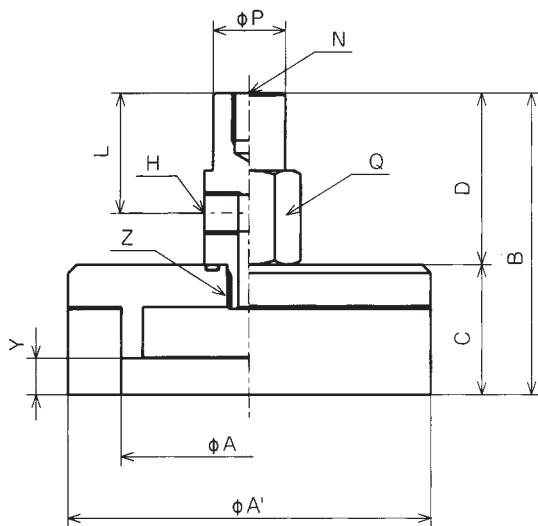
PDTK-60/70/80/100



PDYK-20



PDYK-30/40/50



PDYK-60/70/80/100

mm

PDTK	A	A'	B	C	D	F	G	H	I	J	K	Q	Y	Z	Mass(g)
PDTK-20	20	30	51.2	17	8.2	15	M8 × 1.25	5	3	11	10H	10H	5	M5 × 0.8	35
PDTK-30	30	43	64.2	20	13.2	20	M10 × 1.5	5	3	11	14H	14H	9	M6 × 1.0	63
PDTK-40	40	55	66.2	22	13.2	20	M10 × 1.5	5	3	11	14H	14H	8	M6 × 1.0	90
PDTK-50	50	65	66.2	22	13.2	20	M10 × 1.5	5	3	11	14H	14H	8	M8 × 1.25	120
PDTK-60	60	85	70	30	17	23	M16 × 1.5	Rc1/8	/	/	21H	21H	8	M10 × 1.25	290
PDTK-70	70	100	70	30	17	23	M16 × 1.5	Rc1/8			21H	21H	8	M10 × 1.25	365
PDTK-80	80	110	70	30	17	23	M16 × 1.5	Rc1/8			21H	21H	8	M10 × 1.25	415
PDTK-100	100	130	70	30	17	23	M16 × 1.5	Rc1/8			21H	21H	8	M10 × 1.25	540

inch

PDTK	A	A'	B	C	D	F	G	H	I	J	K	Q	Y	Z	Mass(g)
PDTK-20	0.79	1.18	2.02	0.67	0.32	0.59	M8 × 0.05	0.2	0.12	0.43	0.39H	0.39H	0.2	M5 × 0.03	35
PDTK-30	1.18	1.69	2.53	0.79	0.52	0.79	M10 × 0.06	0.2	0.12	0.43	0.55H	0.55H	0.35	M6 × 0.04	63
PDTK-40	1.57	2.17	2.61	0.87	0.52	0.79	M10 × 0.06	0.2	0.12	0.43	0.55H	0.55H	0.31	M6 × 0.04	90
PDTK-50	1.97	2.56	2.61	0.87	0.52	0.79	M10 × 0.06	0.2	0.12	0.43	0.55H	0.55H	0.31	M8 × 0.05	120
PDTK-60	2.36	3.35	2.76	1.18	0.67	0.91	M16 × 0.06	Rc1/8	/	/	0.83H	0.83H	0.31	M10 × 0.05	290
PDTK-70	2.76	3.94	2.76	1.18	0.67	0.91	M16 × 0.06	Rc1/8			0.83H	0.83H	0.31	M10 × 0.05	365
PDTK-80	3.15	4.33	2.76	1.18	0.67	0.91	M16 × 0.06	Rc1/8			0.83H	0.83H	0.31	M10 × 0.05	415
PDTK-100	3.94	5.12	2.76	1.18	0.67	0.91	M16 × 0.06	Rc1/8			0.83H	0.83H	0.31	M10 × 0.05	540

mm

PDYK	A	A'	B	C	D	H	I	J	L	N	P	Q	Y	Z	Mass(g)
PDYK-20	20	30	40.2	17	23.2	5	3	16	14	M4 depth 6	10	10H	5	M5 × 0.8	35
PDYK-30	30	43	53.2	20	33.2	5	3	18	20	M6 depth 8	12	14H	9	M6 × 1.0	63
PDYK-40	40	55	55.2	22	33.2	5	3	18	20	M6 depth 8	12	14H	8	M6 × 1.0	90
PDYK-50	50	65	55.2	22	33.2	5	3	18	20	M6 depth 8	12	14H	8	M8 × 1.25	125
PDYK-60	60	85	70	30	40	Rc1/8	/	/	28	M8 depth 11	17	21H	8	M10 × 1.25	280
PDYK-70	70	100	70	30	40	Rc1/8			28	M8 depth 11	17	21H	8	M10 × 1.25	355
PDYK-80	80	110	70	30	40	Rc1/8			28	M8 depth 11	17	21H	8	M10 × 1.25	405
PDYK-100	100	130	70	30	40	Rc1/8			28	M8 depth 11	17	21H	8	M10 × 1.25	530

inch

PDYK	A	A'	B	C	D	H	I	J	L	N	P	Q	Y	Z	Mass(g)
PDYK-20	0.79	1.18	1.58	0.67	0.91	0.2	0.12	0.63	0.55	M4 depth 0.24	0.39	0.39H	0.2	M5 × 0.03	35
PDYK-30	1.18	1.69	2.09	0.79	1.31	0.2	0.12	0.71	0.79	M6 depth 0.31	0.47	0.55H	0.35	M6 × 0.04	63
PDYK-40	1.57	2.17	2.17	0.87	1.31	0.2	0.12	0.71	0.79	M6 depth 0.31	0.47	0.55H	0.31	M6 × 0.04	90
PDYK-50	1.97	2.56	2.17	0.87	1.31	0.2	0.12	0.71	0.79	M6 depth 0.31	0.47	0.55H	0.31	M8 × 0.05	125
PDYK-60	2.36	3.35	2.76	1.18	1.57	Rc1/8	/	/	1.1	M8 depth 0.43	0.67	0.83H	0.31	M10 × 0.05	280
PDYK-70	2.76	3.94	2.76	1.18	1.57	Rc1/8			1.1	M8 depth 0.43	0.67	0.83H	0.31	M10 × 0.05	355
PDYK-80	3.15	4.33	2.76	1.18	1.57	Rc1/8			1.1	M8 depth 0.43	0.67	0.83H	0.31	M10 × 0.05	405
PDYK-100	3.94	5.12	2.76	1.18	1.57	Rc1/8			1.1	M8 depth 0.43	0.67	0.83H	0.31	M10 × 0.05	530

# Pad with spring fitting / NAPDTS · YS

## How to order

NAPD <sup>①</sup>T S - <sup>②</sup>20-6 - <sup>③</sup>T

① Vacuum port		② Pad diameter - stroke (mm)				③ Connector	
T	Top port	20-6	φ20-6	60-10	φ60-10	Blank	Without
Y	Side port	20-15	φ20-15	60-30	φ60-30	T	Barb connector
		20-30	φ20-30	60-50	φ60-50	O	Push-in connector
		30-6	φ30-6	70-10	φ70-10		
		30-15	φ30-15	70-30	φ70-30		
		30-30	φ30-30	70-50	φ70-50		
		40-6	φ40-6	80-10	φ80-10		
		40-15	φ40-15	80-30	φ80-30		
		40-30	φ40-30	80-50	φ80-50		
		50-6	φ50-6	100-10	φ100-10		
		50-15	φ50-15	100-30	φ100-30		
		50-30	φ50-30	100-50	φ100-50		

Note) There is no connector for pad with diameter φ60 or above.

## Fitting specifications

Pad diameter		φ20 ~ 50		φ60 ~ 100		
Vacuum port type		Top port	Side port	Top port	Side port	
Connection type	Without connector	M5	M5	Rc1/8	Rc1/8	
	Barb connector	φ4 × 2.5	×	×	×	×
		φ6 × 4	○ (M5)	○ (M5)	×	×
	Push-in connector	φ4 × 2.5	×	×	×	×
φ6 × 4		○ (M5)	○ (M5)	×	×	
Fitting attachment type		Male screw	Male screw	Male screw	Male screw	

## Pad standard specifications

Symbol	Materials	Hardness(Hs)	Ambient temperature	Color
CR	Chloroprene	A15/S	-30 ~ 130°C	Black

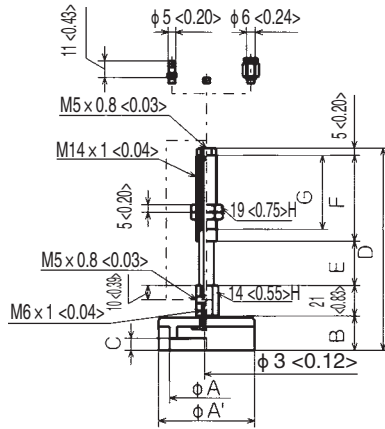
## Applicable fitting table

	How to order	Round pad								
		20	30	40	50	60	70	80	100	
Fitting	Top port	NAPFYS-20B-6-K	○	○	○	○				
		NAPFYS-20B-15-K	○	○	○	○				
		NAPFYS-20B-30-K	○	○	○	○				
		NAPFYS-60-10-K					○	○	○	○
		NAPFYS-60-30-K					○	○	○	○
	NAPFYS-60-50-K					○	○	○	○	
	Side port	NAPFYS-20B-6-K	○	○	○	○				
		NAPFYS-20B-15-K	○	○	○	○				
		NAPFYS-20B-30-K	○	○	○	○				
		NAPFYS-60-10-K					○	○	○	○
NAPFYS-60-30-K						○	○	○	○	
NAPFYS-60-50-K					○	○	○	○		
Setting screw	TN-PF-25-M6	○	○	○						
	TN-PF-50-M6				○					
Holder	PDH-20-M6	○								
	PDH-30		○							
	PDH-40			○						
	PDH-50				○					
	PDH-60					○				
	PDH-70						○			
	PDH-80							○		
	PDH-100								○	

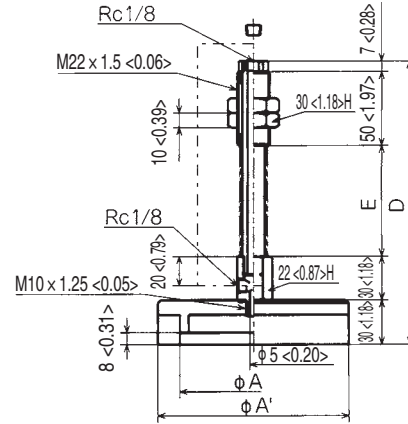
Note 1) A holder is necessary for pad attachment.  
 Note 2) A setting screw is needed to attach pad with diameter 20mm to 50mm.  
 Note 3) Please attach directly pad with diameter 60mm to 100m to the fitting.

Dimensions

Unit : mm <inch>



20/30/40/50



60/70/80/100

mm

NAPDT/YS	A	A'	B	C	D	E	F	G	F <sup>1</sup>	F <sup>2</sup>	Mass(g)
NAPDT/YS-20-6	20	30	18	5	86	6	36	28	2.45	3.43	82.5
NAPDT/YS-20-15	20	30	18	5	95	15	36	28	2.45	4.9	87.5
NAPDT/YS-20-30	20	30	18	5	132	30	58	50	2.9	5.88	112.5
NAPDT/YS-30-6	30	43	21	9	89	6	36	28	2.45	3.43	89
NAPDT/YS-30-15	30	43	21	9	98	15	36	28	2.45	4.9	94
NAPDT/YS-30-30	30	43	21	9	135	30	58	50	2.9	5.88	119
NAPDT/YS-40-6	40	55	23	8	91	6	36	28	2.45	3.43	116.5
NAPDT/YS-40-15	40	55	23	8	100	15	36	28	2.45	4.9	121.5
NAPDT/YS-40-30	40	55	23	8	137	30	58	50	2.9	5.88	146.5
NAPDT/YS-50-6	50	65	23	8	91	6	36	28	2.45	3.43	140
NAPDT/YS-50-15	50	65	23	8	100	15	36	28	2.45	4.9	145
NAPDT/YS-50-30	50	65	23	8	137	30	58	50	2.9	5.88	170
NAPDT/YS-60-10	60	85			137	20			8.82	11.8	436
NAPDT/YS-60-30	60	85			167	50			6.76	15.6	470
NAPDT/YS-60-50	60	85			192	75			8.33	19.6	497
NAPDT/YS-70-10	70	100			137	20			8.82	11.8	510
NAPDT/YS-70-30	70	100			167	50			6.76	15.6	544
NAPDT/YS-70-50	70	100			192	75			8.33	19.6	571
NAPDT/YS-80-10	80	110			137	20			8.82	11.8	560.5
NAPDT/YS-80-30	80	110			167	50			6.76	15.6	594.5
NAPDT/YS-80-50	80	110			192	75			8.33	19.6	621.5
NAPDT/YS-100-10	100	130			137	20			8.82	11.8	681
NAPDT/YS-100-30	100	130			167	50			6.76	15.6	715
NAPDT/YS-100-50	100	130			192	75			8.33	19.6	742

Note) Symbol F<sup>1</sup> in the table shows a spring load (N) at 0 stroke, and F<sup>2</sup> at full stroke.

inch

NAPDT/YS	A	A'	B	C	D	E	F	G	F <sup>1</sup>	F <sup>2</sup>	Mass(g)
NAPDT/YS-20-6	0.79	1.18	0.71	0.2	3.39	0.24	1.42	1.1	2.45	3.43	82.5
NAPDT/YS-20-15	0.79	1.18	0.71	0.2	3.74	0.59	1.42	1.1	2.45	4.9	87.5
NAPDT/YS-20-30	0.79	1.18	0.71	0.2	5.2	1.18	2.28	1.97	2.9	5.88	112.5
NAPDT/YS-30-6	1.18	1.69	0.83	0.35	3.5	0.24	1.42	1.1	2.45	3.43	89
NAPDT/YS-30-15	1.18	1.69	0.83	0.35	3.86	0.59	1.42	1.1	2.45	4.9	94
NAPDT/YS-30-30	1.18	1.69	0.83	0.35	5.31	1.18	2.28	1.97	2.9	5.88	119
NAPDT/YS-40-6	1.57	2.17	0.91	0.31	3.58	0.24	1.42	1.1	2.45	3.43	116.5
NAPDT/YS-40-15	1.57	2.17	0.91	0.31	3.94	0.59	1.42	1.1	2.45	4.9	121.5
NAPDT/YS-40-30	1.57	2.17	0.91	0.31	5.39	1.18	2.28	1.97	2.9	5.88	146.5
NAPDT/YS-50-6	1.97	2.56	0.91	0.31	3.58	0.24	1.42	1.1	2.45	3.43	140
NAPDT/YS-50-15	1.97	2.56	0.91	0.31	3.94	0.59	1.42	1.1	2.45	4.9	145
NAPDT/YS-50-30	1.97	2.56	0.91	0.31	5.39	1.18	2.28	1.97	2.9	5.88	170
NAPDT/YS-60-10	2.36	3.35			5.39	0.79			8.82	11.8	436
NAPDT/YS-60-30	2.36	3.35			6.57	1.97			6.76	15.6	470
NAPDT/YS-60-50	2.36	3.35			7.56	2.95			8.33	19.6	497
NAPDT/YS-70-10	2.76	3.94			5.39	0.79			8.82	11.8	510
NAPDT/YS-70-30	2.76	3.94			6.57	1.97			6.76	15.6	544
NAPDT/YS-70-50	2.76	3.94			7.56	2.95			8.33	19.6	571
NAPDT/YS-80-10	3.15	4.33			5.39	0.79			8.82	11.8	560.5
NAPDT/YS-80-30	3.15	4.33			6.57	1.97			6.76	15.6	594.5
NAPDT/YS-80-50	3.15	4.33			7.56	2.95			8.33	19.6	621.5
NAPDT/YS-100-10	3.94	5.12			5.39	0.79			8.82	11.8	681
NAPDT/YS-100-30	3.94	5.12			6.57	1.97			6.76	15.6	715
NAPDT/YS-100-50	3.94	5.12			7.56	2.95			8.33	19.6	742

Note) Symbol F<sup>1</sup> in the table shows a spring load (N) at 0 stroke, and F<sup>2</sup> at full stroke.

Connector mass(g)

	Tube O.D φ 4	Tube O.D φ 6
T	0.5	1.5
O	3.0	4.0



# Pad with spring fitting, non-rotation / NAPDTH · YH

## How to order

NAPD <sup>①</sup>T H - <sup>②</sup>20-6 - <sup>③</sup>T

① Vacuum port

T	Top port
Y	Side port

② Pad diameter - stroke (mm)

20-6	φ20-6
20-15	φ20-15
20-30	φ20-30
30-6	φ30-6
30-15	φ30-15
30-30	φ30-30
40-6	φ40-6
40-15	φ40-15
40-30	φ40-30
50-6	φ50-6
50-15	φ50-15
50-30	φ50-30

③ Connector

Blank	Without
T	Barb connector
O	Push-in connector

## Fitting specifications

Pad diameter		φ20 ~ 50		
Vacuum port type		Top port	Side port	
Connection type	Without connector	M5	M5	
	Barb connector	φ4 × 2.5	×	×
		φ6 × 4	○ (M5)	○ (M5)
	Push-in connector	φ4 × 2.5	×	×
φ6 × 4		○ (M5)	○ (M5)	
Fitting attachment type		Male screw	Male screw	

## Pad standard specifications

Symbol	Materials	Hardness(Hs)	Ambient temperature	Color
CR	Chloroprene	A15/S	-30 ~ 130°C	Black

## Applicable fitting table

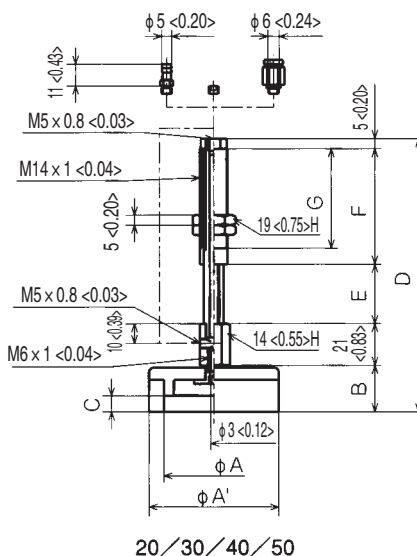
		How to order	Round pad			
			20	30	40	50
Fitting	Top port	NAPFTH-20B-6-K	○	○	○	○
		NAPFTH-20B-15-K	○	○	○	○
		NAPFTH-20B-30-K	○	○	○	○
	Side port	NAPFYH-20B-6-K	○	○	○	○
		NAPFYH-20B-15-K	○	○	○	○
		NAPFYH-20B-30-K	○	○	○	○
Setting screw	TN-PF-25-M6	○	○	○		
	TN-PF-50-M6				○	
Holder	PDH-20-M6	○				
	PDH-30		○			
	PDH-40			○		
	PDH-50				○	

Note 1) A holder is necessary for pad attachment.

Note 2) A setting screw is needed to attach pad with diameter 20mm to 50mm.

Dimensions

Unit : mm <inch>



mm

NAPDT/YH	A	A'	B	C	D	E	F	G	F <sup>1</sup>	F <sup>2</sup>	Mass(g)
NAPDT/YH-20-6	20	30	18	5	86	6	36	28	2.45	3.43	78
NAPDT/YH-20-15	20	30	18	5	95	15	36	28	2.45	4.9	83
NAPDT/YH-20-30	20	30	18	5	132	30	58	50	2.9	5.88	107
NAPDT/YH-30-6	30	43	21	9	89	6	36	28	2.45	3.43	84.5
NAPDT/YH-30-15	30	43	21	9	98	15	36	28	2.45	4.9	89.5
NAPDT/YH-30-30	30	43	21	9	135	30	58	50	2.9	5.88	113.5
NAPDT/YH-40-6	40	55	23	8	91	6	36	28	2.45	3.43	112
NAPDT/YH-40-15	40	55	23	8	100	15	36	28	2.45	4.9	117
NAPDT/YH-40-30	40	55	23	8	137	30	58	50	2.9	5.88	141
NAPDT/YH-50-6	50	65	23	8	91	6	36	28	2.45	3.43	130.5
NAPDT/YH-50-15	50	65	23	8	100	15	36	28	2.45	4.9	135.5
NAPDT/YH-50-30	50	65	23	8	137	30	58	50	2.9	5.88	159.5

Note) Symbol F<sup>1</sup> in the table shows a spring load (N) at 0 stroke, and F<sup>2</sup> at full stroke.

inch

NAPDT/YH	A	A'	B	C	D	E	F	G	F <sup>1</sup>	F <sup>2</sup>	Mass(g)
NAPDT/YH-20-6	0.79	1.18	0.71	0.2	3.39	0.24	1.42	1.1	2.45	3.43	78
NAPDT/YH-20-15	0.79	1.18	0.71	0.2	3.74	0.59	1.42	1.1	2.45	4.9	83
NAPDT/YH-20-30	0.79	1.18	0.71	0.2	5.2	1.18	2.28	1.97	2.9	5.88	107
NAPDT/YH-30-6	1.18	1.69	0.83	0.35	3.5	0.24	1.42	1.1	2.45	3.43	84.5
NAPDT/YH-30-15	1.18	1.69	0.83	0.35	3.86	0.59	1.42	1.1	2.45	4.9	89.5
NAPDT/YH-30-30	1.18	1.69	0.83	0.35	5.31	1.18	2.28	1.97	2.9	5.88	113.5
NAPDT/YH-40-6	1.57	2.17	0.91	0.31	3.58	0.24	1.42	1.1	2.45	3.43	112
NAPDT/YH-40-15	1.57	2.17	0.91	0.31	3.94	0.59	1.42	1.1	2.45	4.9	117
NAPDT/YH-40-30	1.57	2.17	0.91	0.31	5.39	1.18	2.28	1.97	2.9	5.88	141
NAPDT/YH-50-6	1.97	2.56	0.91	0.31	3.58	0.24	1.42	1.1	2.45	3.43	130.5
NAPDT/YH-50-15	1.97	2.56	0.91	0.31	3.94	0.59	1.42	1.1	2.45	4.9	135.5
NAPDT/YH-50-30	1.97	2.56	0.91	0.31	5.39	1.18	2.28	1.97	2.9	5.88	159.5

Note) Symbol F<sup>1</sup> in the table shows a spring load (N) at 0 stroke, and F<sup>2</sup> at full stroke.

Connector mass(g)

	Tube O.D $\phi 4$	Tube O.D $\phi 6$
T	0.5	1.5
O	3.0	4.0

Suction pads

# Foam pad / PDG

## How to order

①  
PDG - 20

① Pad diameter (mm)

20	φ20
30	φ30
40	φ40
50	φ50
60	φ60
70	φ70
80	φ80
100	φ100

## Pad standard specifications

Symbol	Materials	Hardness(Hs)	Ambient temperature	Color
CR	Chloroprene	A15/S	-30 ~ 130°C	Black

## Dimensions

Unit : mm <inch>

