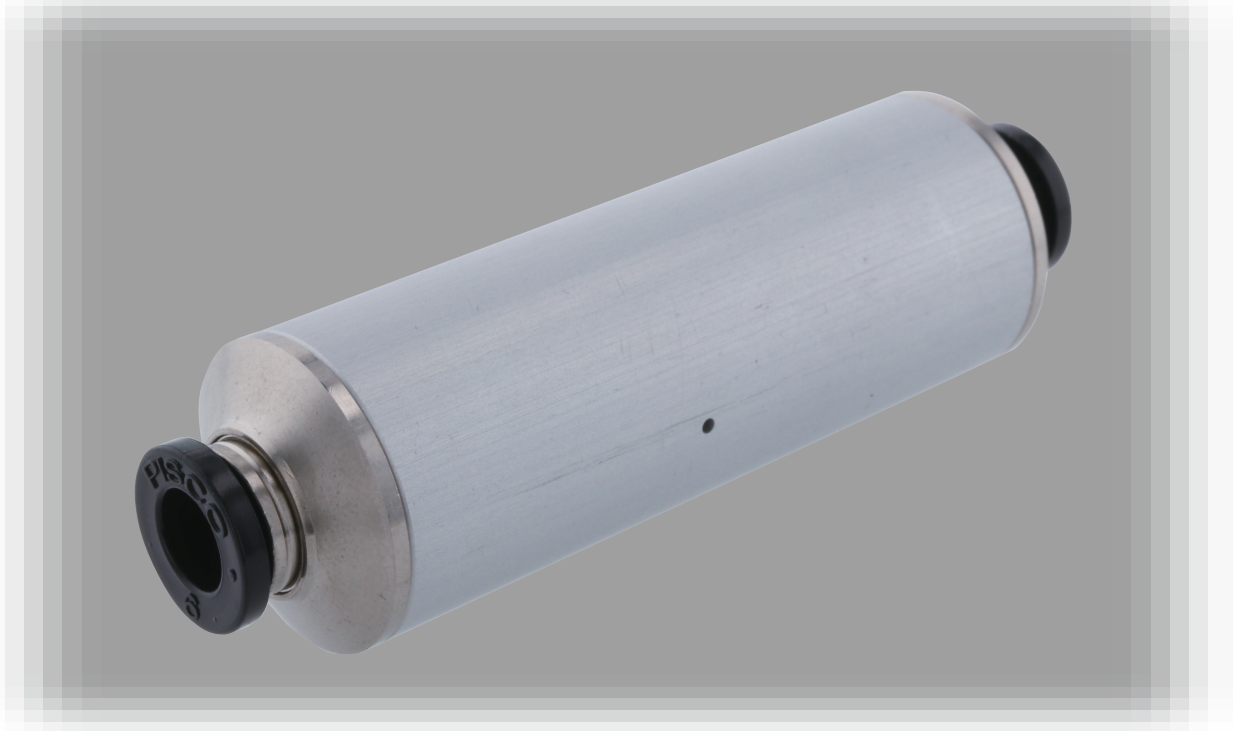


Tamper proof family

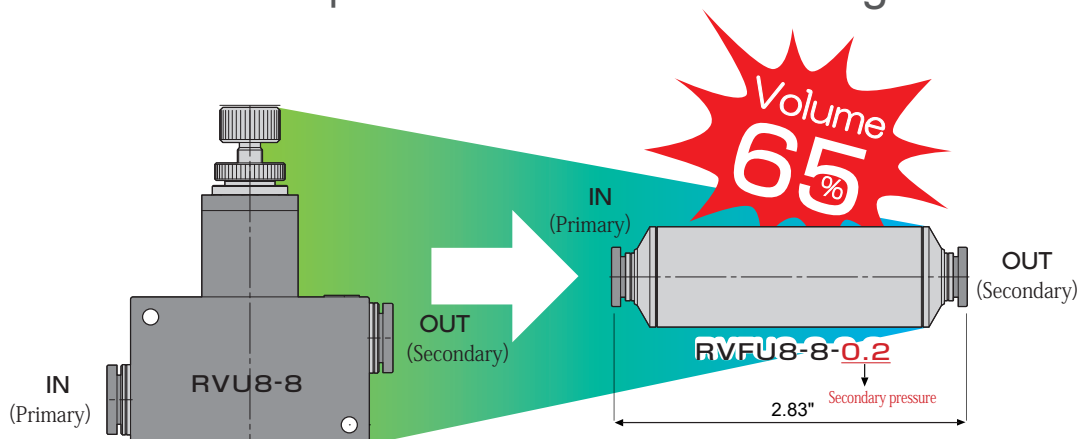


Pre-set Pressure Regulator

Miniature In-Line Relieving Pre-set Pressure Regulator

- *Pre-set, Non-adjustable*
- *In-Line Union*
- *Compact Design, Easy to Install*

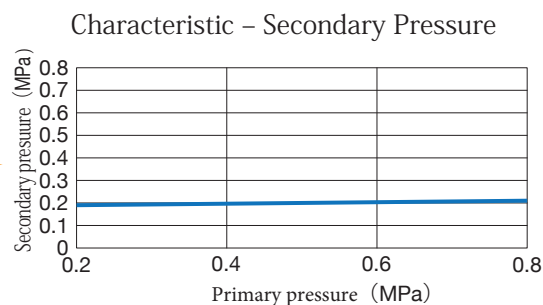
- The down stream pressure is permanently pre-set.
⇒ Easy to install for 5/32", 1/4", 5/16", 3/8", ø4mm, ø6mm, ø8mm, ø10mm O.D. tubing.
- 35% less volume compared with the standard regulator.



- The secondary pressure remains the same even when the primary pressure changes

Ex.) In case of 0.2Mpa (29psi) model

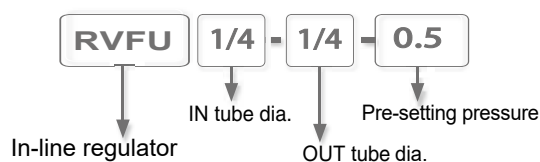
Secondary pressure to primary pressures (actual measurements)



■ Reverse flow mechanism

The regulator can be installed between solenoid valves and cylinders or actuators for immediate exhausting of secondary air pressure.

■ Model Designation (Example)



■ Specification

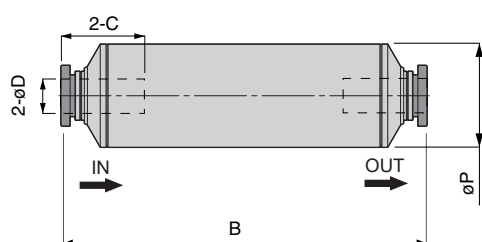
Fluid	Air
Operating pressure range	Pre-set pressure ~ 145psi (1.0MPa)
Operating temp. range	32 ~ 140°F (0~ 60°C) (no freezing)
Applicable tubing O.D.	5/32" (ø4mm), 1/4", 5/16" (ø8mm), 3/8", ø4mm, ø6mm, ø8mm, ø10mm

■ Pre-setting Pressure

Code (Pressure in MPa)	0.2	0.25	0.3	0.35	0.4	0.45	0.5	0.55	0.6
Pressure	29 psi	36.3 psi	43.5 psi	50.8 psi	58 psi	65.3 psi	72.5 psi	79.8 psi	87 psi

❖ Contact us for pressure setting other than the above settings.

RVFU Pressure Pre-set Union



Unit : inch

Model code	Tube O.D. øD	B	øP	Tube end C
RVFU5/32-5/32	5/32	2.75	0.78	0.59
RVFU1/4-1/4	1/4	2.79	0.78	0.67
RVFU5/16-5/16	5/16	2.83	0.78	0.72
RVFU3/8-3/8	3/8	3.43	0.78	0.81
RVFU4-4	ø4mm	2.75	0.78	0.59
RVFU6-6	ø6mm	2.79	0.78	0.67
RVFU8-8	ø8mm	2.83	0.78	0.72
RVFU10-10	ø10mm	3.43	0.78	0.81