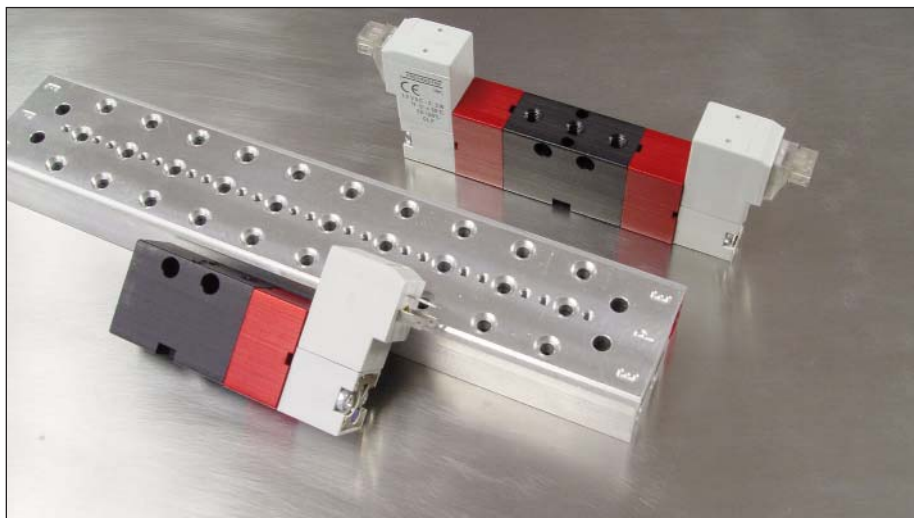


### Features

- 2 to 10 station
- Clear anodized aluminum for corrosion resistance
- Convenient junction point
- Precision machined
- Lightweight



## “20” Series Manifolds

Precision machined aluminum manifolds are a compact, cost effective method of mounting multiple "20" Series valves. The versatile design allows 3 & 4-way valves to be combined on the same manifold.

Choose from two to 10-stations to accommodate application requirements.

Two styles of manifolds are available to compliment the "20" Series Universal and Manifold valve bodies. Be sure to select the correct product grouping when ordering valves and manifolds.

All manifolds are anodized for corrosion resistance. Cover plates are available to conceal unused stations and block the valve supply port.

### Performance Data

Temperature Range
-10°F to 200°F / -23°C to 93°C

### Materials

Aluminum, Clear Anodize

### Port Designation

	Universal	Standard
Pressure	1/8 NPT (F)	1/8 NPT (F)
Output	10-32 (F) top of valve body	10-32 (F)
Exhaust	1/8 NPT (F)	10-32 (F) top of valve body

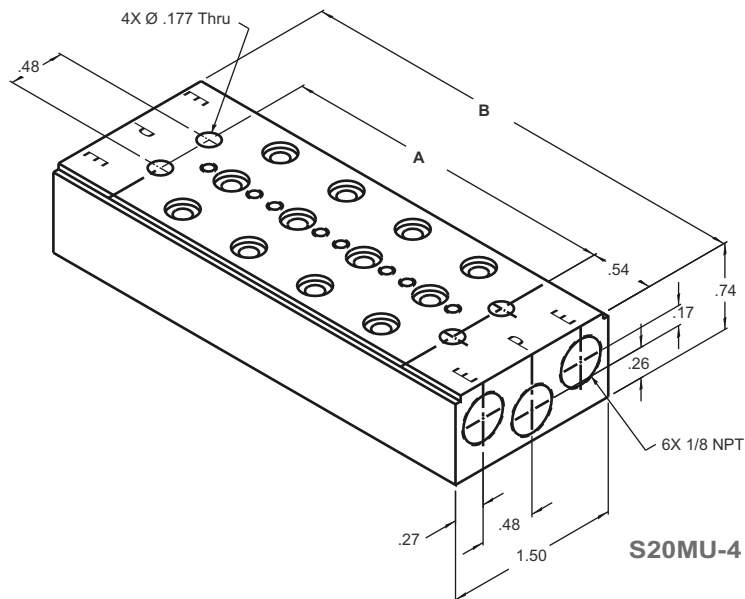
*We design custom products to meet your application needs*

### Ordering Information

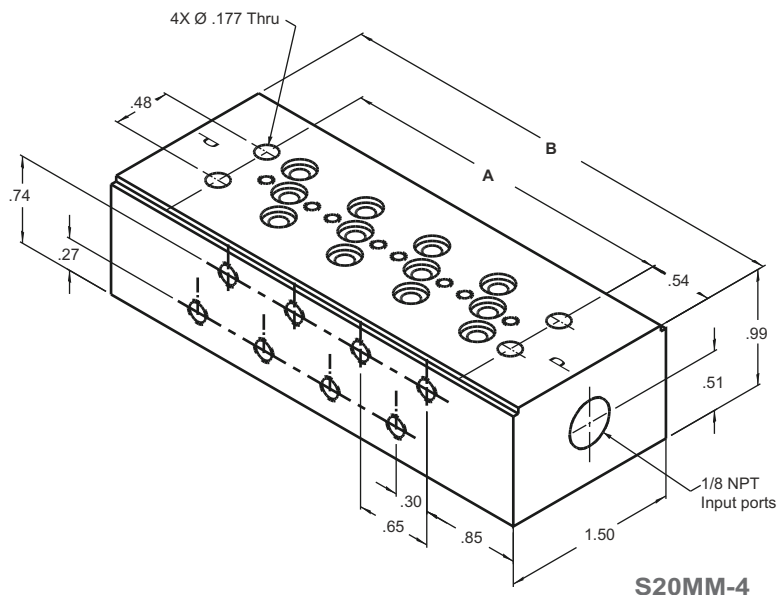
- To order standard product refer to Product Information listing.
- Contact factory for custom colors.
- Cover Plates available to conceal unused stations.
- O-rings and mounting screws included with manifolds.

**"20" Series Manifold**

**Universal**  
1/8 NPT (F)  
Pressure and Exhaust ports



**Standard**  
1/8 NPT (F) Pressure port  
10-32 Output ports



● All measurements in inches, unless otherwise specified. When design makes a dimension critical- contact factory for confirmation. All dimensions shown subject to change without notice.

**Product Information****"20" Series Manifolds****Universal****(for Universal Valve Body)**

Part Number	Stations	A	B
S20MU-2	2	1.57	2.65
S20MU-4	4	2.87	3.95
S20MU-6	6	4.17	5.25
S20MU-8	8	5.47	6.55
S20MU-10	10	6.77	7.85

**Standard****(for Manifold Valve Body)**

Part Number	Stations	A	B
S20MM-2	2	1.57	2.65
S20MM-4	4	2.87	3.95
S20MM-6	6	4.17	5.25
S20MM-8	8	5.47	6.55
S20MM-10	10	6.77	7.85

**Accessory**

Part Number	Description
S20M-CP	Cover plate



Cylinder speeds are easily controlled by using speed control valves in the exhaust ports on top of the valve body

**"20" Series manifolds are designed for use with specific valves. Be sure to select the correct product grouping when ordering valves & manifolds**